

## Fortress

Casegoods Collection

When ordering this product, specification codes must be added to unit Model Number, as shown below.

NOTE: Upholstery and/or additional options must be specified separately.



Fortress

MODEL  
NUMBER -

LAMINATE  
FINISH -

# SF120 -SF

- AR** Aria
- CL** Candlelight
- CH** Chocolate
- DV** Dolce Vita
- GR** Grenada
- HM** Hard Rock Maple
- HA** Havana
- PA** Palomino
- RC** Rustic Cherry
- WC** White Chocolate

## Fortress

Casegoods Collection

Standard sizes shown. Custom sizes and configurations available upon request. Call for pricing.

### SF120

DESCRIPTION –

Bedside Table  
With 3 drawers



DIMENSIONS –

Width 19  
Depth 18.625  
Height 29.5  
Cubic Feet 7

OPTIONS –

3mm PVC edge +0

MODEL NO.

SF120 3 drawers

PRICE

CAD \$ 1273

### SF130

DESCRIPTION –

Bedside Table  
With 3 open fixed shelves



DIMENSIONS –

Width 19  
Depth 18.625  
Height 29.5  
Cubic Feet 7

OPTIONS –

3mm PVC edge +0

MODEL NO.

SF130 3 open fixed shelves

PRICE

CAD \$ 1012

### SF200

DESCRIPTION –

Dresser  
With 3 drawers



DIMENSIONS –

Width 31  
Depth 18.625  
Height 29.5  
Cubic Feet 12

OPTIONS –

3mm PVC edge +0

MODEL NO.

SF200 3 drawers

PRICE

CAD \$ 1532

S  
S  
E  
R  
T  
J  
O  
F  
F  
O  
R  
T  
E  
S  
S

## Fortress

Casegoods Collection

Standard sizes shown. Custom sizes and configurations available upon request. Call for pricing.

### SF205

#### DESCRIPTION –

Dresser  
With 3 open fixed shelves



#### DIMENSIONS –

Width 31  
Depth 18.625  
Height 29.5  
Cubic Feet 12

#### OPTIONS –

3mm PVC edge +0

#### MODEL NO.

SF205 3 open fixed shelves

#### PRICE

CAD \$ 1261

### SF210

#### DESCRIPTION –

Chest  
With 4 drawers



#### DIMENSIONS –

Width 31  
Depth 18.625  
Height 37.75  
Cubic Feet 42

#### OPTIONS –

3mm PVC edge +0

#### MODEL NO.

SF210 4 drawers

#### PRICE

CAD \$ 1833

### SF215

#### DESCRIPTION –

Chest  
With 4 open fixed shelves



#### DIMENSIONS –

Width 31  
Depth 18.625  
Height 37.75  
Cubic Feet 42

#### OPTIONS –

3mm PVC edge +0

#### MODEL NO.

SF215 4 open fixed shelves

#### PRICE

CAD \$ 1488

S  
S  
e  
a  
r  
t  
o  
r  
F  
o  
r  
t  
r  
e  
s  
s

## Fortress

Casegoods Collection

Standard sizes shown. Custom sizes and configurations available upon request. Call for pricing.

### SF300

DESCRIPTION –

Double Wardrobe

With interior shelf

Includes j-bar



DIMENSIONS –

Width 36

Depth 23.5

Height 73.5

Cubic Feet 38

OPTIONS –

3mm PVC edge

+0

MODEL NO.

PRICE

SF300 Interior shelf, j-bar

CAD \$

3251

### SF330-L / SF330-R

DESCRIPTION –

Single Wardrobe

With interior shelf

Includes j-bar



DIMENSIONS –

Width 24

Depth 23.5

Height 73.5

Cubic Feet 25

OPTIONS –

3mm PVC edge

+0

MODEL NO.

PRICE

SF330-L Left-hinged (shown)

CAD \$

2627

SF330-R Right-hinged

CAD \$

2627

### SF340

DESCRIPTION –

Single Wardrobe

With 5 open fixed shelves



DIMENSIONS –

Width 24

Depth 23.5

Height 73.5

Cubic Feet 25

OPTIONS –

3mm PVC edge

+0

MODEL NO.

PRICE

SF340 5 open fixed shelves

CAD \$

2078

S  
S  
E  
J  
T  
J  
O  
F  
F  
O  
R  
T  
E  
S  
S

## Fortress

Casegoods Collection

Standard sizes shown. Custom sizes and configurations available upon request. Call for pricing.

### SF310

DESCRIPTION –

Double Wardrobe  
With 10 open fixed shelves



DIMENSIONS –

Width 36  
Depth 23.5  
Height 73.5  
Cubic Feet 38

OPTIONS –

3mm PVC edge +0

MODEL NO.

PRICE

MODEL NO.	PRICE
SF310 10 open fixed shelves	CAD \$ 3055

### SF400-L / SF400-R

DESCRIPTION –

Desk  
With 3 drawer pedestal



DIMENSIONS –

Width 47  
Depth 18.625  
Height 30.25  
Cubic Feet 17

OPTIONS –

3mm PVC edge +0

MODEL NO.

PRICE

SF400-L Drawers on left (shown)	CAD \$ 1846
SF400-R Drawers on right	CAD \$ 1846

### SF410-L / SF410-R

DESCRIPTION –

Desk  
With 3 open fixed shelves



DIMENSIONS –

Width 47  
Depth 18.625  
Height 30.25  
Cubic Feet 17

OPTIONS –

3mm PVC edge +0

MODEL NO.

PRICE

SF410-L Shelves on left (shown)	CAD \$ 1558
SF410-R Shelves on right	CAD \$ 1558

S  
S  
E  
J  
T  
J  
O  
F  
E  
O  
F  
T  
R  
E  
S  
S

## Fortress

Casegoods Collection

Standard sizes shown. Custom sizes and configurations available upon request. Call for pricing.

### SF500

DESCRIPTION –

Platform Bed  
Includes bolt-to-floor brackets



DIMENSIONS –

Width 82  
Depth 38.25  
Height 15  
Cubic Feet 32

OPTIONS –

Enclosed underside (cannot be bolted to floor) +398  
Stainless steel deck tie downs (4 per side) +570  
Note: Bed will be 3" wider when tie downs are specified



DECK TIE  
DOWNS

MODEL NO.		PRICE
SF500	No storage, open underside	CAD \$ 2527

### SF550

DESCRIPTION –

Platform Bed, rounded corners  
Includes bolt-to-floor brackets



DIMENSIONS –

Width 82  
Depth 38.25  
Height 18  
Cubic Feet 32

OPTIONS –

Enclosed underside (cannot be bolted to floor) +398  
Stainless steel deck tie downs (4 per side) +570  
Note: Bed will be 3" wider when tie downs are specified



DECK TIE  
DOWNS

MODEL NO.		PRICE
SF550	Higher end panels, no storage, open underside	CAD \$ 2620

S  
S  
S  
E  
R  
T  
J  
O  
F  
F  
O  
R  
T  
R  
E  
S  
S

## Fortress

### Casegoods Collection

Standard sizes shown. Custom sizes and configurations available upon request. Call for pricing.

#### SF500-BTL

##### DESCRIPTION –

Platform Bed

With left built-in bedside table

Includes bolt-to-floor brackets



##### DIMENSIONS –

Width 50

Depth 82

Height 15

Bed Width 38.25

Bedside Width 11.75

Bedside Depth 16

Cubic Feet 42

##### OPTIONS –

Enclosed underside (cannot be bolted to floor) +398

Stainless steel deck tie downs (4 per side) +570  
Note: Bed will be 3" wider when tie downs are specified



DECK TIE  
DOWNS

##### MODEL NO.

##### PRICE

<b>SF500-BTL</b> Left bedside table	CAD \$	3237
-------------------------------------	--------	------

#### SF500-BTR

##### DESCRIPTION –

Platform Bed

With right built-in bedside table

Includes bolt-to-floor brackets



##### DIMENSIONS –

Width 50

Depth 82

Height 15

Bed Width 38.25

Bedside Width 11.75

Bedside Depth 16

Cubic Feet 42

##### OPTIONS –

Enclosed underside (cannot be bolted to floor) +398

Stainless steel deck tie downs (4 per side) +570  
Note: Bed will be 3" wider when tie downs are specified



DECK TIE  
DOWNS

##### MODEL NO.

##### PRICE

<b>SF500-BTR</b> Right bedside table	CAD \$	3237
--------------------------------------	--------	------

S  
S  
E  
S  
J  
O  
L  
F  
O  
R  
T  
R  
E  
S  
S

## Fortress

### Casegoods Collection

Different fabrics may be specified on the seat and on the back. In this case, use the higher grade of the two. No additional upcharge applies. All prices are in CA dollars (CAD).

### SF550-BTL

#### DESCRIPTION –

Platform Bed

With rounded corners

With left built-in bedside tables

Includes bolt-to-floor brackets



#### DIMENSIONS –

Width 50

Depth 82

Height 18

Bed Width 38.25

Bedside Width 11.75

Bedside Depth 16

Cubic Feet 44

#### OPTIONS –

Enclosed underside (cannot be bolted to floor) +398

Stainless steel deck tie downs (4 per side) +570  
Note: Bed will be 3" wider when tie downs are specified



DECK TIE  
DOWNS

#### MODEL NO.

SF550-BTL Rounded corners, left beside table

CAD \$

#### PRICE

3330

### SF550-BTR

#### DESCRIPTION –

Platform Bed

With rounded corners

With right built-in bedside table

Includes bolt-to-floor brackets



#### DIMENSIONS –

Width 50

Depth 82

Height 18

Bed Width 38.25

Bedside Width 11.75

Bedside Depth 16

Cubic Feet 44

#### OPTIONS –

Enclosed underside (cannot be bolted to floor) +398

Stainless steel deck tie downs (4 per side) +570  
Note: Bed will be 3" wider when tie downs are specified



DECK TIE  
DOWNS

#### MODEL NO.

SF550-BTR Rounded corners, right bedside tables

CAD \$

#### PRICE

3330

S  
S  
E  
F  
O  
R  
T  
R  
E  
S  
S



## Fortress

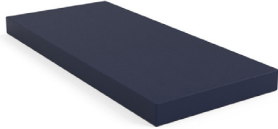
Casegoods Collection

Standard sizes shown. Custom sizes and configurations available upon request. Call for pricing.

### SF36805

#### DESCRIPTION –

5" Mattress



#### DIMENSIONS –

Width 80

Depth 36

Height 5

Ship Weight 18

#### MODEL NO.

**SF36805** Seamless, tear-resistant cover

#### PRICE

CAD \$

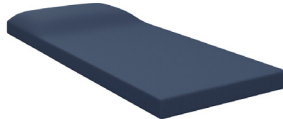
1164

### SF36805-PW

#### DESCRIPTION –

5" Mattress

With built-in pillow



#### DIMENSIONS –

Width 80

Depth 36

Height 5

Ship Weight 18

#### MODEL NO.

**SF36805-PW** Seamless, tear-resistant cover

#### PRICE

CAD \$

1316

S  
S  
E  
J  
T  
J  
O  
F  
F  
O  
R  
T  
S  
S  
E  
S