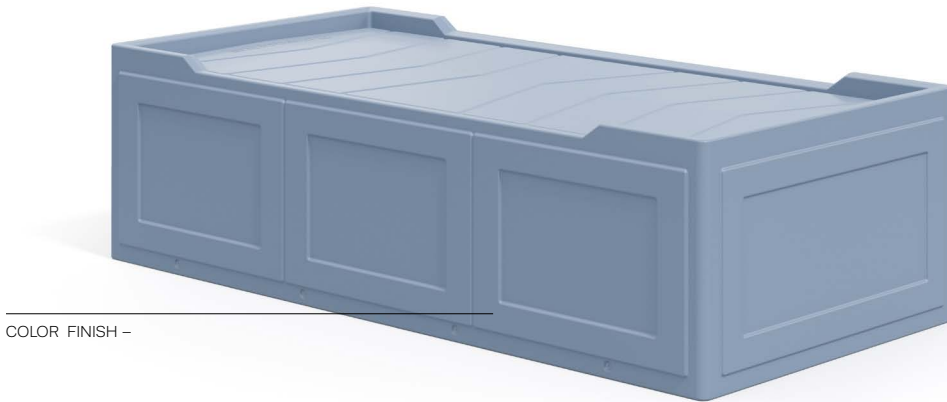


**Frontier**

Casegoods Collection

When ordering this product, specification MODEL NO.s must be added to unit Model Number, as shown below. Custom finishes require a minimum quantity order. Please contact customer service for more information.  
NOTE: Upholstery and additional options must be specified separately.



COLOR FINISH -

Frontier

MODEL  
NUMBER -

COLOR  
FINISH -

**FRBD3681 -DB**

**CB** Cornflower Blue

**CG** Chateau Grey

**DB** Dusty Blue

**HP** Heather Purple

**IG** Iron Gate

**SA** Sage Green

**SG** Slate Green

**WS** Warm Sand

## Frontier

Casegoods Collection

### FRBD3681

#### DESCRIPTION –

Bed



#### DIMENSIONS –

Width 86.75

Depth 42

Height 24

Ship Weight 182

Cubic Feet 50

#### OPTIONS –

Bolt-to-floor (Model BTFFRB) +0

Enclosed bottom (adds 54 lbs) +398

Patient restraint module, set of 4 +420

#### MODEL NO.

#### PRICE

FRBD3681

CAD \$

3659

### SF36805

#### DESCRIPTION –

Mattress



#### DIMENSIONS –

Width 80

Depth 36

Height 5

Cubic Feet 14

Ship Weight 18

#### MODEL NO.

#### PRICE

SF36805 Mattress

CAD \$

1320

### SF36805-PW

#### DESCRIPTION –

Mattress

With built-in pillow



#### DIMENSIONS –

Width 80

Depth 36

Height 5

Cubic Feet 14

Ship Weight 18

#### MODEL NO.

#### PRICE

SF36805-PW Mattress, built-in pillow

CAD \$

1492

Frontier

**FR101**

DESCRIPTION –

Bedside Cabinet



DIMENSIONS –

Width 20.25  
 Depth 20  
 Height 26  
 Ship Weight 29  
 Cubic Feet 6

OPTIONS –

Bolt-to-floor (Model BTFFRC) +0

| MODEL NO.          | PRICE       |
|--------------------|-------------|
| FR101 "Flip-style" | CAD \$ 1288 |

**FRC121A**

DESCRIPTION –

Armless Chair



DIMENSIONS –

Width 22  
 Depth 25.5  
 Height 33  
 Ship Weight 45  
 Cubic Feet 11

OPTIONS –

Bolt-to-floor (Model BTFFRC) +0  
 Ganging bracket (Model CCGFRC) +40  
 Factory supplied ballast - 50 lbs Model No. BST50 +65

| MODEL NO. | PRICE       |
|-----------|-------------|
| FRC121A   | CAD \$ 1013 |

**FRCG500**

DESCRIPTION –



DIMENSIONS –

Width 36.25  
 Depth 23  
 Height 29  
 Ship Weight 43  
 Cubic Feet 14

OPTIONS –

Bolt-to-floor (Model BTFFRC) +0  
*Desks are designed to be installed against a wall. Mounting features are visible on the back side.*

| MODEL NO. | PRICE       |
|-----------|-------------|
| FRCG500   | CAD \$ 2150 |

## Frontier

Casegoods Collection

### FRCG702

DESCRIPTION –



DIMENSIONS –

Width 29  
Depth 14  
Height 22  
Storage Width 22  
Storage Depth 11  
Storage Height 11/clear  
Ship Weight 23  
Cubic Feet 5

| MODEL NO. | PRICE       |
|-----------|-------------|
| FRCG702   | CAD \$ 1028 |

### FRCG703

DESCRIPTION –

Three Shelf Wall Mount Unit



DIMENSIONS –

Width 29  
Depth 14  
Height 51  
Storage Width 22  
Storage Depth 11  
Storage Height 11/11/11  
Ship Weight 49  
Cubic Feet 12

| MODEL NO. | PRICE       |
|-----------|-------------|
| FRCG703   | CAD \$ 1654 |

Frontier