

Fortress

Casegoods Collection

When ordering this product, specification codes must be added to unit Model Number, as shown below.

NOTE: Upholstery and/or additional options must be specified separately.



LAMINATE FINISH -

MODEL
NUMBER -

LAMINATE
FINISH -

SF120 -SF

- AR Aria
- CL Candlelight
- CH Chocolate
- DV Dolce Vita
- GR Grenada
- HM Hard Rock Maple
- HA Havana
- PA Palomino
- RC Rustic Cherry
- WC White Chocolate

Fortress

Fortress

Casegoods Collection

Standard sizes shown. Custom sizes and configurations available upon request. Call for pricing.

SF120

DESCRIPTION –

Bedside Table
With 3 drawers



DIMENSIONS –

Width 19
Depth 18.625
Height 29.5
Cubic Feet 7

OPTIONS –

3mm PVC edge +0

MODEL NO.

SF120 3 drawers

PRICE

USD \$ 1273

SF130

DESCRIPTION –

Bedside Table
With 3 open fixed shelves



DIMENSIONS –

Width 19
Depth 18.625
Height 29.5
Cubic Feet 7

OPTIONS –

3mm PVC edge +0

MODEL NO.

SF130 3 open fixed shelves

PRICE

USD \$ 1012

SF200

DESCRIPTION –

Dresser
With 3 drawers



DIMENSIONS –

Width 31
Depth 18.625
Height 29.5
Cubic Feet 12

OPTIONS –

3mm PVC edge +0

MODEL NO.

SF200 3 drawers

PRICE

USD \$ 1532

Fortress

Fortress

Casegoods Collection

Standard sizes shown. Custom sizes and configurations available upon request. Call for pricing.

SF205

DESCRIPTION –

Dresser
With 3 open fixed shelves



DIMENSIONS –

Width 31
Depth 18.625
Height 29.5
Cubic Feet 12

OPTIONS –

3mm PVC edge +0

MODEL NO.

SF205 3 open fixed shelves

PRICE

USD \$ 1261

SF210

DESCRIPTION –

Chest
With 4 drawers



DIMENSIONS –

Width 31
Depth 18.625
Height 37.75
Cubic Feet 42

OPTIONS –

3mm PVC edge +0

MODEL NO.

SF210 4 drawers

PRICE

USD \$ 1833

SF215

DESCRIPTION –

Chest
With 4 open fixed shelves



DIMENSIONS –

Width 31
Depth 18.625
Height 37.75
Cubic Feet 42

OPTIONS –

3mm PVC edge +0

MODEL NO.

SF215 4 open fixed shelves

PRICE

USD \$ 1488

S
S
e
a
r
t
o
f
F
o
r
t
r
e
s
s

Fortress

Casegoods Collection

Standard sizes shown. Custom sizes and configurations available upon request. Call for pricing.

SF300

DESCRIPTION –

Double Wardrobe

With interior shelf

Includes j-bar



DIMENSIONS –

Width 36

Depth 23.5

Height 73.5

Cubic Feet 38

OPTIONS –

3mm PVC edge

+0

MODEL NO.

SF300 Interior shelf, j-bar

USD \$

PRICE

3251

SF330-L / SF330-R

DESCRIPTION –

Single Wardrobe

With interior shelf

Includes j-bar



DIMENSIONS –

Width 24

Depth 23.5

Height 73.5

Cubic Feet 25

OPTIONS –

3mm PVC edge

+0

MODEL NO.

SF330-L Left-hinged (shown)

USD \$

2627

SF330-R Right-hinged

USD \$

2627

SF340

DESCRIPTION –

Single Wardrobe

With 5 open fixed shelves



DIMENSIONS –

Width 24

Depth 23.5

Height 73.5

Cubic Feet 25

OPTIONS –

3mm PVC edge

+0

MODEL NO.

SF340 5 open fixed shelves

USD \$

PRICE

2078

S
S
E
J
T
J
O
F
F
O
R
T
E
S

Fortress

Casegoods Collection

Standard sizes shown. Custom sizes and configurations available upon request. Call for pricing.

SF310

DESCRIPTION –

Double Wardrobe
With 10 open fixed shelves



DIMENSIONS –

Width 36
Depth 23.5
Height 73.5
Cubic Feet 38

OPTIONS –

3mm PVC edge +0

MODEL NO.

PRICE

MODEL NO.	PRICE
SF310 10 open fixed shelves	USD \$ 3055

SF400-L / SF400-R

DESCRIPTION –

Desk
With 3 drawer pedestal



DIMENSIONS –

Width 47
Depth 18.625
Height 30.25
Cubic Feet 17

OPTIONS –

3mm PVC edge +0

MODEL NO.

PRICE

MODEL NO.	PRICE
SF400-L Drawers on left (shown)	USD \$ 1846
SF400-R Drawers on right	USD \$ 1846

SF410-L / SF410-R

DESCRIPTION –

Desk
With 3 open fixed shelves



DIMENSIONS –

Width 47
Depth 18.625
Height 30.25
Cubic Feet 17

OPTIONS –

3mm PVC edge +0

MODEL NO.

PRICE

MODEL NO.	PRICE
SF410-L Shelves on left (shown)	USD \$ 1558
SF410-R Shelves on right	USD \$ 1558

S
S
E
J
T
J
O
F
F
O
R
T
R
E
S
S

Fortress

Casegoods Collection

Standard sizes shown. Custom sizes and configurations available upon request. Call for pricing.

SF500

DESCRIPTION –

Platform Bed

Includes bolt-to-floor brackets



DIMENSIONS –

Width 82

Depth 38.25

Height 15

Cubic Feet 32

OPTIONS –

Enclosed underside (cannot be bolted to floor) +398

Stainless steel deck tie downs (4 per side) +570
Note: Bed will be 3" wider when tie downs are specified



DECK TIE
DOWNS

MODEL NO.

PRICE

SF500 No storage, open underside	USD \$	2527
---	--------	------

SF550

DESCRIPTION –

Platform Bed, rounded corners

Includes bolt-to-floor brackets



DIMENSIONS –

Width 82

Depth 38.25

Height 18

Cubic Feet 32

OPTIONS –

Enclosed underside (cannot be bolted to floor) +398

Stainless steel deck tie downs (4 per side) +570
Note: Bed will be 3" wider when tie downs are specified



DECK TIE
DOWNS

MODEL NO.

PRICE

SF550 Higher end panels, no storage, open underside	USD \$	2620
--	--------	------

S
S
S
E
R
T
J
O
F
F
O
R
T
R
E
S
S

Fortress

Casegoods Collection

Standard sizes shown. Custom sizes and configurations available upon request. Call for pricing.

SF500-BTL

DESCRIPTION –

Platform Bed
With left built-in bedside table
Includes bolt-to-floor brackets



DIMENSIONS –

Width 50
Depth 82
Height 15
Bed Width 38.25
Bedside Width 11.75
Bedside Depth 16
Cubic Feet 42

OPTIONS –

Enclosed underside (cannot be bolted to floor) +398
Stainless steel deck tie downs (4 per side) +570
Note: Bed will be 3" wider when tie downs are specified



DECK TIE
DOWNS

MODEL NO.

SF500-BTL Left bedside table

PRICE

USD \$ 3237

SF500-BTR

DESCRIPTION –

Platform Bed
With right built-in bedside table
Includes bolt-to-floor brackets



DIMENSIONS –

Width 50
Depth 82
Height 15
Bed Width 38.25
Bedside Width 11.75
Bedside Depth 16
Cubic Feet 42

OPTIONS –

Enclosed underside (cannot be bolted to floor) +398
Stainless steel deck tie downs (4 per side) +570
Note: Bed will be 3" wider when tie downs are specified



DECK TIE
DOWNS

MODEL NO.

SF500-BTR Right bedside table

PRICE

USD \$ 3237

S
S
E
R
T
J
O
F
F
O
R
T
R
E
S
S

Fortress

Casegoods Collection

Different fabrics may be specified on the seat and on the back. In this case, use the higher grade of the two. No additional upcharge applies. All prices are in US dollars (USD).

SF550-BTL

DESCRIPTION –

Platform Bed

With rounded corners

With left built-in bedside tables

Includes bolt-to-floor brackets



DIMENSIONS –

Width 50

Depth 82

Height 18

Bed Width 38.25

Bedside Width 11.75

Bedside Depth 16

Cubic Feet 44

OPTIONS –

Enclosed underside (cannot be bolted to floor) +398

Stainless steel deck tie downs (4 per side) +570
Note: Bed will be 3" wider when tie downs are specified



DECK TIE
DOWNS

MODEL NO.

PRICE

SF550-BTL Rounded corners, left beside table	USD \$	3330
---	--------	------

SF550-BTR

DESCRIPTION –

Platform Bed

With rounded corners

With right built-in bedside table

Includes bolt-to-floor brackets



DIMENSIONS –

Width 50

Depth 82

Height 18

Bed Width 38.25

Bedside Width 11.75

Bedside Depth 16

Cubic Feet 44

OPTIONS –

Enclosed underside (cannot be bolted to floor) +398

Stainless steel deck tie downs (4 per side) +570
Note: Bed will be 3" wider when tie downs are specified



DECK TIE
DOWNS

MODEL NO.

PRICE

SF550-BTR Rounded corners, right bedside tables	USD \$	3330
--	--------	------

S
S
E
F
O
R
T
R
E
S
S

Fortress

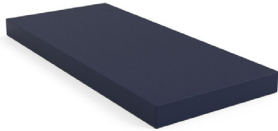
Casegoods Collection

Standard sizes shown. Custom sizes and configurations available upon request. Call for pricing.

SF36805

DESCRIPTION –

5" Mattress



DIMENSIONS –

Width 80

Depth 36

Height 5

Ship Weight 18

MODEL NO.

PRICE

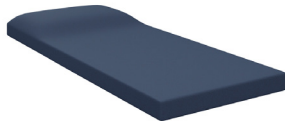
SF36805 Seamless, tear-resistant cover	USD \$	1164
---	--------	------

SF36805-PW

DESCRIPTION –

5" Mattress

With built-in pillow



DIMENSIONS –

Width 80

Depth 36

Height 5

Ship Weight 18

MODEL NO.

PRICE

SF36805-PW Seamless, tear-resistant cover	USD \$	1316
--	--------	------

S
S
E
J
T
J
O
F
F
O
R
T
E
S
S